



Press-in tools

for connector
mounting

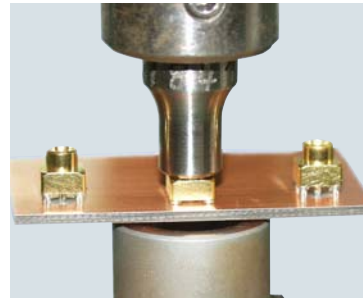


Press-in tools for connector mounting

The mounting of Press-in and Press-fit connectors requires the use of presses with special press-in dies.

Depending on the technology, on the connector family and the panel, different press-in tools can be used. When selecting the tools, the following criterias need to be considered:

- Connector size
- Panel or PCB size
- Press-in forces of the Connectors
- Press-in position and direction
- Manual or automatic press-in process
- Option of force/path controlled press-in
- etc.



Examples of press-in tools

Manual presses

For manual mounting of connectors we recommend the manual presses from SCHMIDT Feinwerktechnik. There are different models available.



Hydro-pneumatic presses

The hydro-pneumatic presses from SCHMIDT Feinwerktechnik allow automatic mounting with force/path control.



Force/path control unit
Kraft/Weg Kontrolleinheit



Coaxial connectors Press-in



Connector	Part No.	Tool No.
MCX	0807.01.1212.291	4/1611
	0486.01.1212.291	4/1611
	2856.01.2010.191	4/1612
	2976.01.2010.001	4/0333
	3102.01.2010.001	4/0333
SMB	0239.11.1212.291	4/1611
	2855.11.1010.191	4/1613
	3100.11.1010.091	4/1613
SMC	2663.12.2010.191	4/1612
	2839.12.1010.191	4/1612
SMA	1921.42.2115.191	4/1623
	2219.42.2010.091	4/1621
	2664.42.2010.091	4/1623
	2668.42.2010.091	4/1621
	2891.42.2010.191	4/1614
	2922.42.2010.191	4/1614
	2994.42.2010.091	4/1623
	2996.42.2010.091	4/1623
	3052.42.2010.091	4/1623
	3131.42.2014.101	4/1614
	3163.42.2010.091	4/1623
	Din 41 626 inserts	0939.53.1610.001
2942.53.1025.401		4/0333
2384.53.2525.401		4/0333
TNC	0717.02.2310.019	4/1618
	0717.02.2310.029	4/1618
	2393.02.2010.109	4/1618
N	2303.62.2010.095	4/1620
	2835.62.2010.095	4/1620
	2862.62.2810.175	4/0983
	2884.62.2014.095	4/1620
	2961.62.2010.095	4/1620
	2998.62.2010.095	4/1620
3078.62.2010.095	4/0983	
7/16	3267.08.2814.284	4/1578
	3344.08.2814.274	4/1578

Press-fit



Connector	Part No.	Tool No.
MCX	1991.01.2010.001	4/1046
SMB (50 Ohm)	1787.11.1520.001	4/0333
	1977.11.1010.001	4/0837
	1996.11.1010.001	4/0842
	2247.11.1022.201	4/0333
	2851.11.1524.201	4/0333
SMB (75 Ohm)	1784.11.1610.001	4/0838
	1976.11.1610.001	4/0838
	2091.81.1523.201	4/0333
SMA	2244.42.2020.201	4/0333
	2440.42.2022.201	4/0333
	3105.42.2510.001	4/0333
Din 41 626 inserts	3070.53.1025.401	4/0333
1.0/2.3	2422.53.1520.001	4/0333
	2982.53.1010.001	4/1309
BNC:	2691.05.2524.009	4/0983
	2793.05.2415.009	4/0624
1.6 / 5.6	1798.52.2510.005	4/1139
	2874.52.2023.005	4/0333

The screenshot shows a web browser window displaying the INSCS website. The page title is "MCX-p.c.b. mount jack (N 50 Ohm)". The navigation menu includes: Home | Downloads | Literature | Impressum | Deutsch | Search. The main content area shows a technical drawing of the connector with dimensions: 5.08, 2.54, 9.7, 6.9, 7, 5.08, and a hole diameter of Ø1 ±0.00 / 0.05. Below the drawing is a quote request form with fields for "Qty.", "Delivery requested", and "Part Number" (1991.01.2010.001). The form also includes a checkbox for "Plating" with options "1 = Au", "5 = Optalloy". A button labeled "Add to quote request form" is visible. The footer of the page includes "Product style (1 found)" and "Part number Preferred 1991.01.2010.001 no".

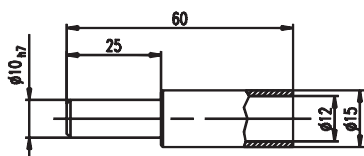
Tools

Tool Drawing

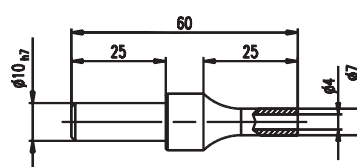
Tool No.

Tool Drawing

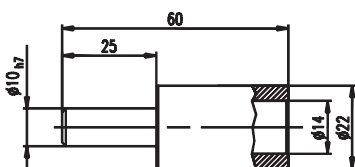
Tool No.



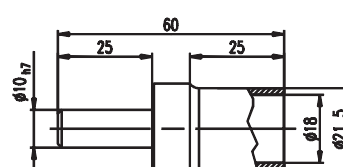
4/1618



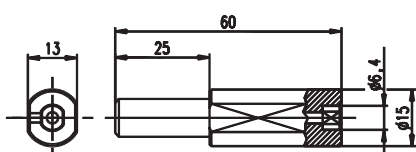
4/1611



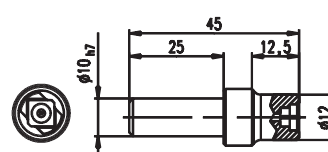
4/1620



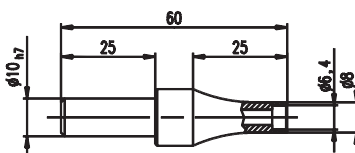
4/1578



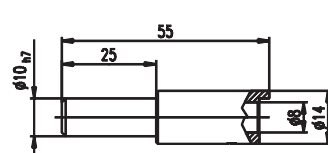
4/1621



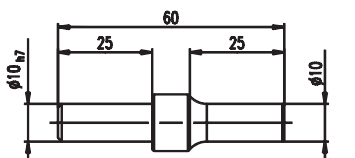
4/1046



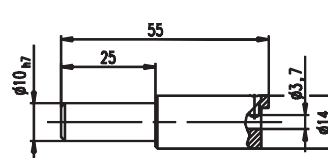
4/1623



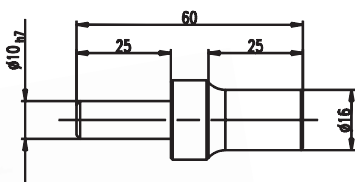
4/0837



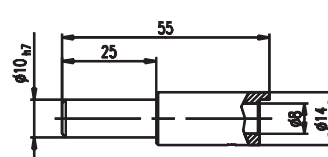
4/0333



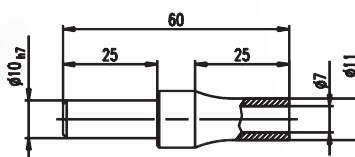
4/0842



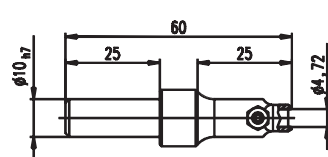
4/0983



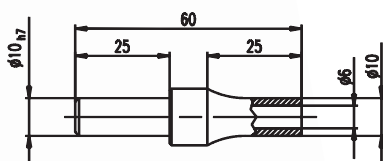
4/0838



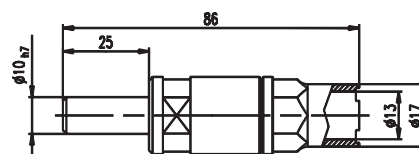
4/1614



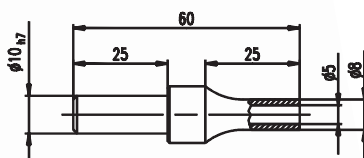
4/1309



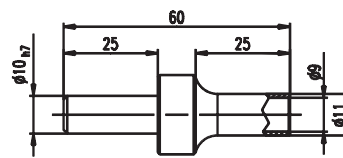
4/1613



4/0624



4/1612



4/1139

Reference values for Press-in connectors



Reference values

Press-in SMA

Max. press-in force	4 kN
Min. extraction force	0,2 kN
Min. torque	2 Nm
Connector knurl	Ø 5,3 mm
Panel drill hole	Ø 5,2 mm
Panel material	AlSi alloy
Connector material	Brass



Reference values

Press-in N

Max. press-in force	10 kN
Min. extraction force	3 kN
Min. torque	40 Nm
Connector knurl	Ø 14,3 mm
Panel drill hole	Ø 14,2 mm
Panel material	AlMg alloy
Connector material	Brass



Reference values

Press-in 7/16

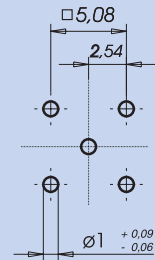
Max. press-in force	18 kN
Min. extraction force	5 kN
Min. torque	60 Nm
Connector knurl	Ø 22,0 mm
Panel drill hole	Ø 21,8 mm
Panel material	AlMg alloy
Connector material	Brass



Technical information for Press-fit connectors



Press-fit layout and structure



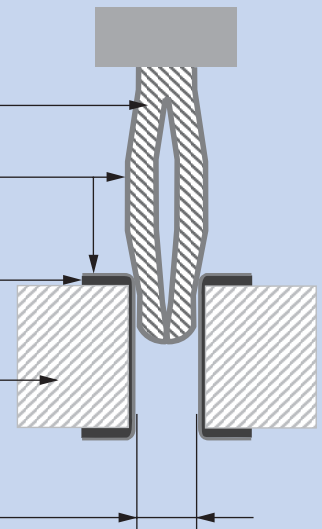
Spring core

Tin plating

Copper layer

PCB base material

Finish metallised
drill hole Ø1mm



Mechanical specification

Applies to standard	IEC 352
Max. press-in force per Press-fit pin	180 N
Min. extraction force per Press-fit pin	20 N

Press-fit pin

Press-fit material	Bronze
Press-fit surface	SnPb over Ni
Press-fit shape	Eye of the needle

Printed circuit board

Base material	FR4 or equivalent
Thickness	1,5 - 3,2 mm
Finish metallised drill hole	Ø 1 mm +0,09/-0,06

Environmental specification

Vibration	IEC 512 - 4
Long time storage	IEC 512 - 5
Operating temperature	-40° C up to + 85° C; IEC 512 - 6
Climatic sequences	IEC 512 - 6
Corrosion (industry, atmosphere)	IEC 68 - 2 - 60 (method 4)

Your global connection

Press-in tools



SCHMIDT Feintechnik GmbH

Feldbergstraße 1
D-78112 St. Georgen
Tel (+49) 77 24 89 90
Fax (+49) 77 24 89 91 01
Net www.schmidt-feintechnik.de
E-mail info@schmidt-feintechnik.de

USA

SCHMIDT Feintechnik Corp.
Cranberry Corporate Center
230 Executive Drive
Cranberry Twp., PA 16066
Tel (+1) 724-772-4600
Fax (+1) 724-772-4688
E-mail info@schmidtpresses.com
Net www.schmidtpresses.com

United Kingdom

SCHMIDT Feintechnik Ltd.
Unit 14/18, The Markham Centre
Theale, Reading
Berks RG7 4PE
Tel (+44) 0118-9305-464
Fax (+44) 0118-9305-440
E-mail schmidtfeintechnik@virgin.net
Net www.schmidtfeintechnik.co.uk

Press-in dies



Head Office

Germany

IMS Connector Systems GmbH
Obere Hauptstraße 30
D-79843 Löffingen
PO Box 1141
D-79840 Löffingen
Tel (+49) 76 54 90 10
Fax (+49) 76 54 90 11 99
Net www.imscs.com
E-mail sales@imscs.com

Sales offices

China

IMS Connector Systems Ltd
No 35, Huo Ju Road
SND Science & Technology Park
Suzhou 215011
Tel (+86) 512 6 808 18 16
Fax (+86) 512 6 825 23 88
E-mail sales@imscscn.com

Denmark

IMS Connector Systems ApS
Fredtoftevej 15A
DK-2980 Kokkedal
Tel (+45) 45 1 609 10
Fax (+45) 45 1 609 16
E-mail IMS.DK@dk.imscs.com



Production plants

China

IMS Connector Systems Ltd
SDN Science & Technology Park
Suzhou 215011

France

IMS Connector Systems
46, rue Bellier
F-44000 Nantes
Tel (+33) 2 51 84 24 24
Fax (+33) 2 51 84 24 25
E-mail contact@fr.imscs.com



Hungary

IMS Connector Systems Kft
H-9400 Sopron

United Kingdom

IMS Connector Systems (UK) Ltd
G1 Cumberland Business Centre
Northumberland Road
Portsmouth
Hants PO5 1DS
Tel (+44) 23 92 75 00 11
Fax (+44) 23 92 75 00 22
E-mail IMSCSUK@uk.imscs.com

USA

IMS Connector Systems
401 E. Corporate Drive, Suite #100
Lewisville TX 75067, USA
Tel (+1) 469 948 4885
Fax (+1) 469 948 4881
E-mail sales@imscsusa.com

IMS CONNECTOR SYSTEMS

www.imscs.com